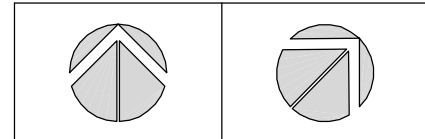


NO	ISSUED	DATE
1	ISSUED FOR MUNICIPAL REVIEW	MAR. 09, 2005
2	ISSUED FOR MUNICIPAL REVIEW	MAR. 24, 2005
3	ISSUED FOR SITE PLAN APPROVAL	JAN. 16, 2005

**ZONING NOTES**

NO ZONING NOTES

**PROJECT NORTH TRUE NORTH**



**LEGAL DESCRIPTION**

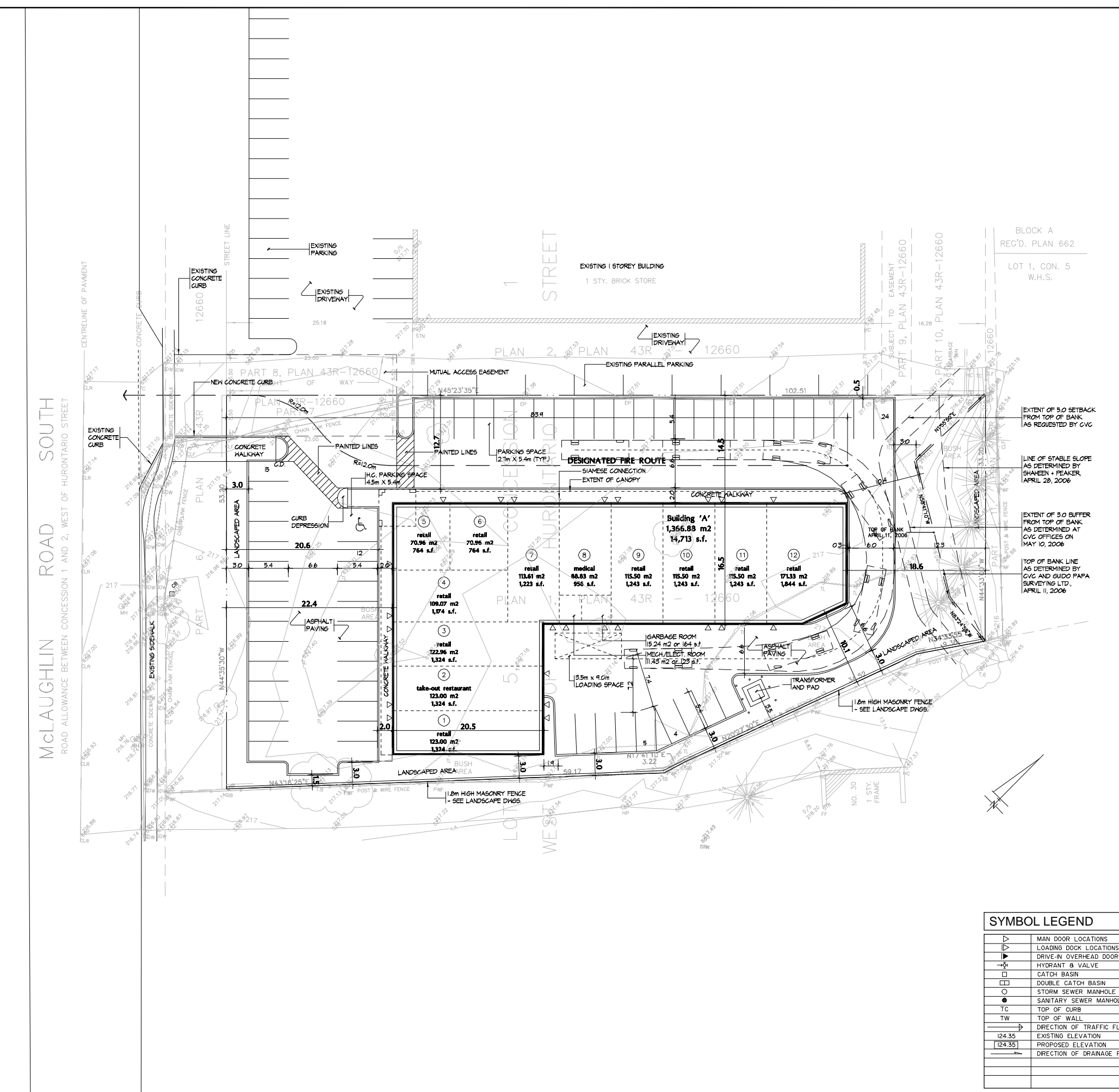
PART OF LOT 5  
CONCESSION 1  
WEST OF HURONTARIO STREET  
CITY OF BRAMPTON  
REGIONAL MUNICIPALITY OF PEEL

**SITE STATISTICS**

SITE AREA	4,860.22m <sup>2</sup> or 1.20 acres	
ZONING	REQUIRED	PROVIDED
	SC - 3149	
FRONT YARD SETBACK	22.4m MINIMUM	22.4m (BUILDING) 20.6m (TOWER)
INTERIOR SIDE YARD SETBACK	9.0m MINIMUM	3.0m
EXTERIOR SIDE YARD SETBACK	N/A	N/A
REAR YARD SETBACK	20.0m MINIMUM	18.6m
BUILDING HEIGHT	6.1m MAXIMUM	6.0m (BUILDING) 10.0m (TOWER)
BUILDING G.F.A.		
Building "A"	1,366.88 m <sup>2</sup> or 14,713 sq.ft.	
BUILDING G.C.F.A.		
Building "A" deductions allowed	11.43 m <sup>2</sup> or 123 sq.ft.	
Building "A" G.C.F.A.	1,355.45 m <sup>2</sup> or 14,590 sq.ft.	
SITE COVERAGE PROVIDED	1,366.88 m <sup>2</sup> or 28.12 %	
LANDSCAPED AREA	1,182.59 m <sup>2</sup> or 24.33 %	
PAVED AREA	2,310.75 m <sup>2</sup> or 47.55 %	
	REQUIRED	PROVIDED
PARKING REQUIRED		
The Gross Leasable Area for Restaurants and Medical Uses:	138.46 m <sup>2</sup>	211.83 m <sup>2</sup>
Building "A" Retail 1,143.62 m <sup>2</sup> X 1/23 m <sup>2</sup>	49.72 spaces	
Building "A" Medical 88.83 m <sup>2</sup> X 1/12 m <sup>2</sup>	7.40 spaces	
Building "A" Take-Out Restaurant 123.00 m <sup>2</sup> X 1/16.7 m <sup>2</sup>	7.37 spaces	
TOTAL	65 spaces	60 spaces
H/C PARKING SPACES	1 space	1 space
LOADING SPACES	1 space	1 space

**CONTRACTOR NOTES**

- CONTRACTOR TO SUPPLY AND INSTALL FIRE ROUTE SIGNS (AS PER APPLICABLE BY-LAW) ALONG DESIGNATED FIRE ROUTE AT +/-20m INTERVALS.
- CONTRACTOR TO SUPPLY AND INSTALL HANDICAP PARKING SIGNS AT THE ENDS OF EACH HANDICAP PARKING SPACE. CONTRACTOR TO PAINT HANICAP SYMBOLS AT EACH HANDICAP PARKING SPACE.
- CONTRACTOR TO SUPPLY AND INSTALL THREE (3) ASPHALT SPEED BUMPS, WITH WARNING SIGNS, ACROSS WIDTH OF DRIVEWAY. LOCATION TO BE DETERMINED BY OWNER.
- CONTRACTOR TO SUPPLY AND INSTALL 300mm HIGH STREET NUMBER FOR BUILDING. LOCATION TO BE DETERMINED BY OWNER.
- CONTRACTOR TO SUPPLY AND INSTALL UNIT NUMBERS ON THE FRONT DOOR AND REAR DOOR OF EACH UNIT AND AT MECHANICAL AND GARBAGE ROOMS.



**SYMBOL LEGEND**

▽	MAN DOOR LOCATIONS
▷	LOADING DOCK LOCATIONS
▶	DRIVE-IN OVERHEAD DOORS
⊕	HYDRANT & VALVE
⊘	CATCH BASIN
⊞	DOUBLE CATCH BASIN
○	STORM SEWER MANHOLE
●	SANITARY SEWER MANHOLE
TC	TOP OF CURB
TW	TOP OF WALL
→	DIRECTION OF TRAFFIC FLOW
124.35	EXISTING ELEVATION
[124.35]	PROPOSED ELEVATION
→	DIRECTION OF DRAINAGE FLOW

NO	REVISION	DATE

**Jaipur McQueen Plaza**

Queen & McLaughlin  
Brampton, Ontario

**A. BALDASSARRA Architect Inc.**

7800 Jane Street, Suite 200  
Concord, Ontario L4K 4R6  
Tel: (905) 660-0722  
Fax: (905) 660-7019



**DRAWING TITLE**

**Site Plan  
SP06-10**

**DRAWN BY** hg **SCALE** 1:250

**DATE** December, 2004 **CHECKED BY**

**PROJECT NO** P-0448 **DRAWING NO** A-10